

CARBINE G70 WINDOW STOP SPECIFICATION SHEET



IMPORTANT NOTES

To comply with the regulations & provide adequate security, the window stop must:

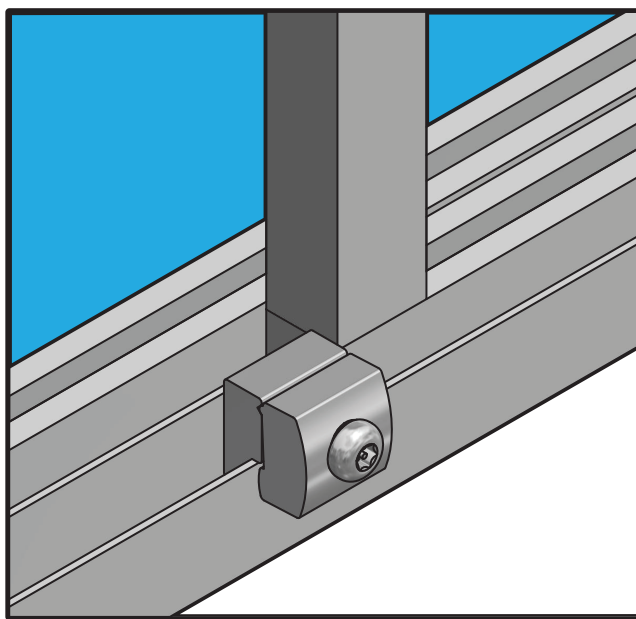
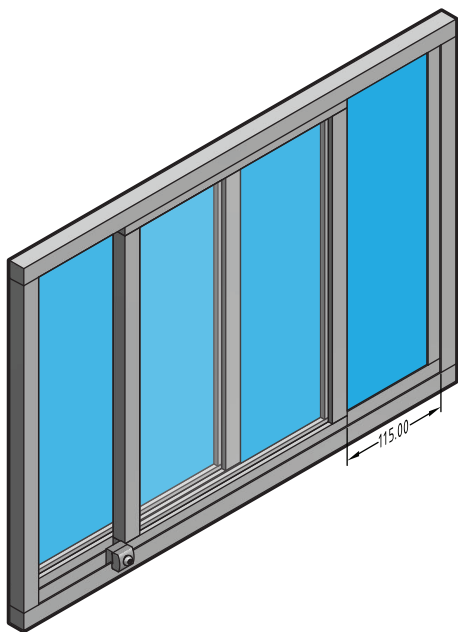
- Be installed on a sliding aluminium window
- Be checked every 4 weeks to ensure the screw is tightly secured
- Be installed at the correct distance to restrict the window opening (per the excerpt of regulations)
- Have the Torn key removed at all times and placed out of reach of children.

BCA REGULATIONS EXCERPT

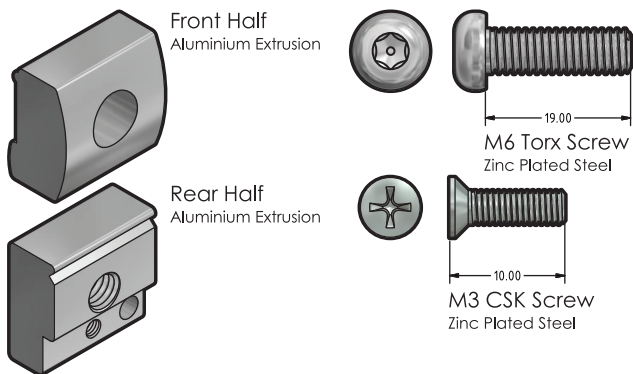
D2.24 Protection Of Openable Windows

The openable portion of the window must be protected with a device to restrict the window opening.

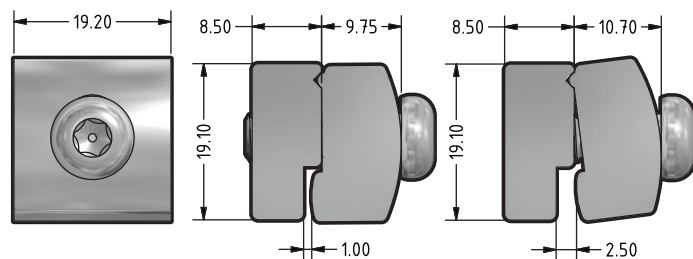
The device or screen must not permit a 125 mm sphere to pass through the window opening and resist an outward horizontal action of 250 N against the window restrained by the device.



G70 WINDOW STOP SPECS

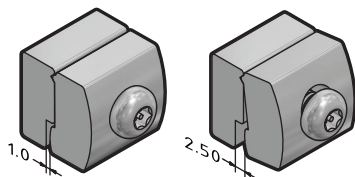


BASIC DIMENSIONS



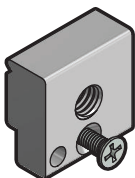
WINDOW FRAME WIDTHS

The G70 Window Stop can work with window frame thickness from 1.0mm too 2.50mm.



SECURING SCREW

The G70 window stop utilizes a M3 locking screw to prevent the window stop from sliding on the window frame.



DRILLING TEMPLATE

The rear half of the G70 Window Stop is also used as a drilling guide.

* Please see the Instructions for fitting information

TORX SCREW

The G70 window stop utilizes a M6 Torx screw to secure the window stop onto the window frame. The pin in Torx screw also prevents a regular allen key to be used. A pin in Torx key will be supplied.

